

\$434,900 - 3816 Powell Wynd, Edmonton

MLS® #E4458728

\$434,900

3 Bedroom, 2.50 Bathroom, 1,775 sqft

Single Family on 0.00 Acres

Paisley, Edmonton, AB

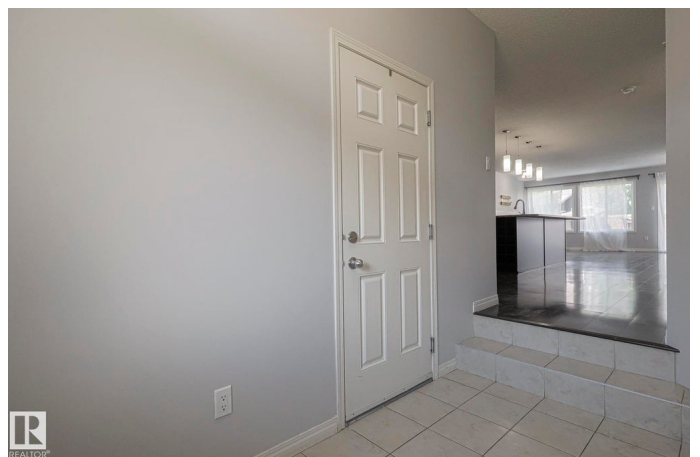
Offered at an Unbelievable Price - Discover this Sizeable Single Attached Garage Duplex (1775) sqft in the vibrant community of Paisley featuring Fresh Paint and Brand New Vinyl Plank Flooring on the upper floor. With 3 spacious bedrooms, 2.5 baths & an upstairs bonus room, this home offers a modern and functional layout with high-quality finishes throughout. The open-concept main floor features a bright living room with an electric fireplace and a modern kitchen with granite counters and a corner pantry. Upstairs, the primary bedroom boasts large walk-in closet & a 4 pc ensuite with double vanity & the convenient upper floor laundry adds ease to daily living. Two additional bedrooms, a functional bonus room and main bathroom complete the upper level. Partly finished basement comes with framing fully complete. The attached single garage provides ample parking and storage. Ideally located close to parks, schools, and shopping, this property is perfect for families looking for style, comfort, and convenience.

Built in 2014

Essential Information

MLS® # E4458728

Price \$434,900



Bedrooms	3
Bathrooms	2.50
Full Baths	2
Half Baths	1
Square Footage	1,775
Acres	0.00
Year Built	2014
Type	Single Family
Sub-Type	Half Duplex
Style	2 Storey
Status	Active

Community Information

Address	3816 Powell Wynd
Area	Edmonton
Subdivision	Paisley
City	Edmonton
County	ALBERTA
Province	AB
Postal Code	T6W 1A3

Amenities

Amenities	Deck, Detectors Smoke, No Animal Home, No Smoking Home
Parking Spaces	2
Parking	Single Garage Attached

Interior

Interior Features	ensuite bathroom
Appliances	Dishwasher-Built-In, Dryer, Fan-Ceiling, Garage Control, Garage Opener, Hood Fan, Refrigerator, Stove-Electric, Washer
Heating	Forced Air-1, Natural Gas
Stories	2
Has Basement	Yes
Basement	Full, Partially Finished

Exterior

Exterior	Wood, Vinyl
Exterior Features	Airport Nearby, Commercial, Fenced, Flat Site, Golf Nearby, Landscaped, Playground Nearby, Public Transportation, Schools,

	Shopping Nearby
Roof	Asphalt Shingles
Construction	Wood, Vinyl
Foundation	Concrete Perimeter

Additional Information

Date Listed	September 19th, 2025
Days on Market	3
Zoning	Zone 55

DATA IS DEEMED RELIABLE BUT IS NOT GUARANTEED ACCURATE BY THE REALTORS® ASSOCIATION OF EDMONTON. COPYRIGHT 2025 BY THE REALTORS® ASSOCIATION OF EDMONTON. ALL RIGHTS RESERVED. Trademarks are owned or controlled by the Canadian Real Estate Association (CREA) and identify real estate professionals who are members of CREA (REALTOR®, REALTORS®) and/or the quality of services they provide (MLS®, Multiple Listing Service®)

Listing information last updated on September 22nd, 2025 at 2:02pm MDT