

## \$489,900 - 16105 49 Street, Edmonton

MLS® #E4457234

**\$489,900**

4 Bedroom, 3.00 Bathroom, 1,947 sqft  
Single Family on 0.00 Acres

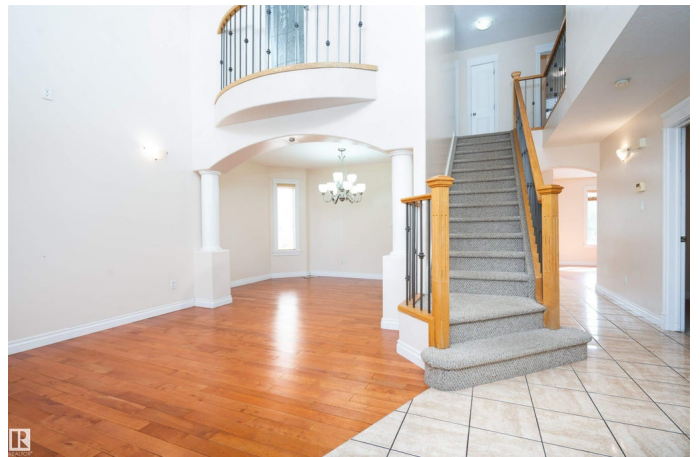
Brintnell, Edmonton, AB

Designed for everyday living and stylish entertaining, this 4 bed, 3 bath home with a double attached garage is sure to impress. Step inside to a welcoming foyer and sun-filled open-to-below living room. The formal dining area is perfect for family gatherings, while the main level bedroom and full bath add convenience. Relax in the family room with fireplace or enjoy meals in the bright breakfast nook adjoining a functional kitchen with pantry. Step outside to a landscaped yard with no maintenance deck and sleek glass railing, your private oasis for summer evenings. Upstairs, retreat to the primary suite with walk-in closet and 4pc ensuite, while two more bedrooms and a 4pc bath offer plenty of space. The open-to-below balcony adds architectural charm. The unfinished basement awaits your creativity. Close to schools, parks, playgrounds, grocery stores, major banks, restaurants, and with quick access to Anthony Henday Dr & Manning Dr, everything you need is at your doorstep.

Built in 2007

### Essential Information

MLS® #	E4457234
Price	\$489,900
Bedrooms	4



Bathrooms	3.00
Full Baths	3
Square Footage	1,947
Acres	0.00
Year Built	2007
Type	Single Family
Sub-Type	Detached Single Family
Style	2 Storey
Status	Active

### **Community Information**

Address	16105 49 Street
Area	Edmonton
Subdivision	Brintnell
City	Edmonton
County	ALBERTA
Province	AB
Postal Code	T5Y 0G7

### **Amenities**

Amenities	Deck, Detectors Smoke, Front Porch, Smart/Program. Thermostat
Parking	Double Garage Attached

### **Interior**

Interior Features	ensuite bathroom
Appliances	Dishwasher-Built-In, Dryer, Garage Opener, Hood Fan, Refrigerator, Stove-Electric, Washer, Window Coverings
Heating	Forced Air-1, Natural Gas
Fireplace	Yes
Fireplaces	Tile Surround
Stories	2
Has Basement	Yes
Basement	Full, Unfinished

### **Exterior**

Exterior	Wood, Stucco
Exterior Features	Fenced, Landscaped, Playground Nearby, Public Transportation, Schools, Shopping Nearby, See Remarks
Roof	Asphalt Shingles

Construction Wood, Stucco  
Foundation Concrete Perimeter

### **Additional Information**

Date Listed September 11th, 2025  
Days on Market 11  
Zoning Zone 03

DATA IS DEEMED RELIABLE BUT IS NOT GUARANTEED ACCURATE BY THE REALTORS® ASSOCIATION OF EDMONTON. COPYRIGHT 2025 BY THE REALTORS® ASSOCIATION OF EDMONTON. ALL RIGHTS RESERVED. Trademarks are owned or controlled by the Canadian Real Estate Association (CREA) and identify real estate professionals who are members of CREA (REALTOR®, REALTORS®) and/or the quality of services they provide (MLS®, Multiple Listing Service®)

Listing information last updated on September 22nd, 2025 at 12:02pm MDT