

\$375,000 - 9021 150 Street, Edmonton

MLS® #E4456764

\$375,000

2 Bedroom, 1.00 Bathroom, 725 sqft

Single Family on 0.00 Acres

Jasper Park, Edmonton, AB

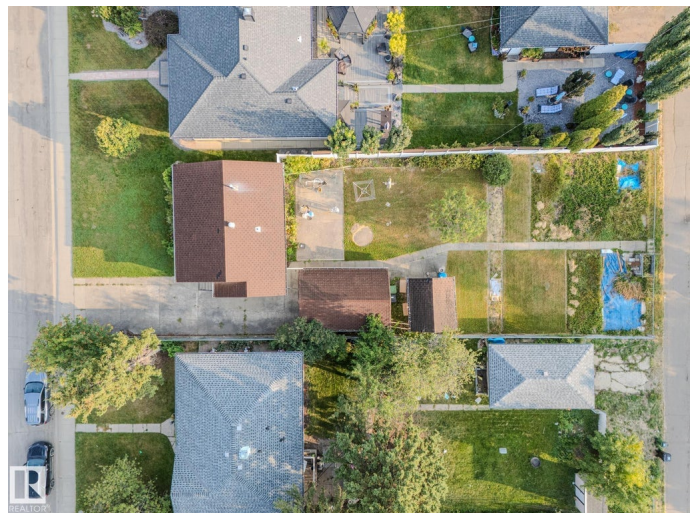
***more photos to come *** Charming raised bungalow ready for a creative touch. Situated on a 50' x 150' lot with a rear lane this yard lends itself to the outdoorsy type. A large vegetable garden with a beautiful garden shed await you! This was a well cared for home and yard. The basement is fully finished. Oversized single garage is in great shape. This is an excellent starter home, great for a flipper or investor.

Built in 1958

Essential Information

MLS® #	E4456764
Price	\$375,000
Lease Rate	\$15
Bedrooms	2
Bathrooms	1.00
Full Baths	1
Square Footage	725
Acres	0.00
Year Built	1958
Type	Single Family
Sub-Type	Detached Single Family
Style	Bungalow
Status	Active

Community Information



Address	9021 150 Street
Area	Edmonton
Subdivision	Jasper Park
City	Edmonton
County	ALBERTA
Province	AB
Postal Code	T5R 1E8

Amenities

Amenities	Bar, No Animal Home, No Smoking Home, Parking-Extra
Parking	Over Sized, Single Garage Detached

Interior

Appliances	Dryer, Refrigerator, Stove-Electric, Washer
Heating	Forced Air-1, Natural Gas
Stories	2
Has Basement	Yes
Basement	Full, Finished

Exterior

Exterior	Wood, Metal
Exterior Features	Back Lane, Fenced, Flat Site, Landscaped, Picnic Area, Playground Nearby, Public Transportation, Schools, Vegetable Garden
Lot Description	50'X150'
Roof	Asphalt Shingles
Construction	Wood, Metal
Foundation	Concrete Perimeter

Additional Information

Date Listed	September 8th, 2025
Days on Market	14
Zoning	Zone 22

DATA IS DEEMED RELIABLE BUT IS NOT GUARANTEED ACCURATE BY THE REALTORS® ASSOCIATION OF EDMONTON. COPYRIGHT 2025 BY THE REALTORS® ASSOCIATION OF EDMONTON. ALL RIGHTS RESERVED. Trademarks are owned or controlled by the Canadian Real Estate Association (CREA) and identify real estate professionals who are members of CREA (REALTOR®, REALTORS®) and/or the quality of services they provide (MLS®, Multiple Listing Service®)

Listing information last updated on September 23rd, 2025 at 4:47am MDT