

\$329,900 - 24 415 Clareview Road, Edmonton

MLS® #E4442670

\$329,900

3 Bedroom, 2.50 Bathroom, 1,179 sqft

Condo / Townhouse on 0.00 Acres

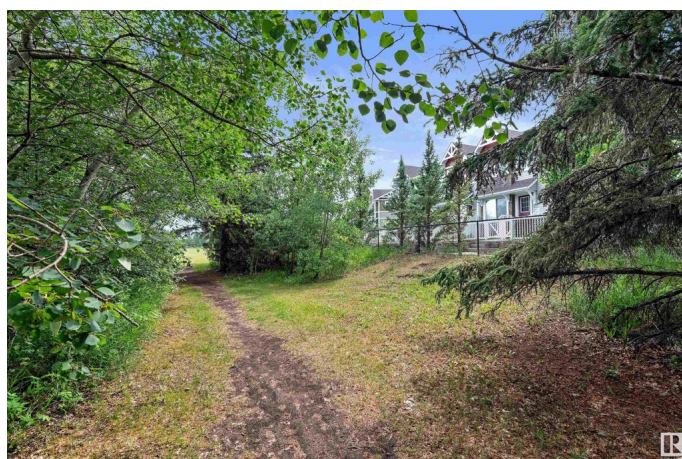
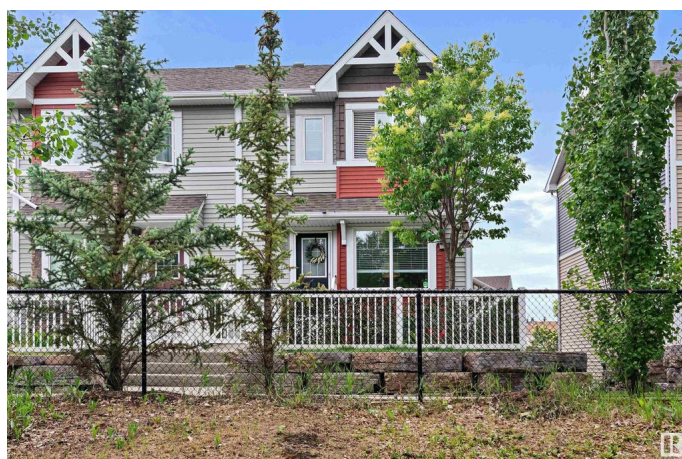
Kernohan, Edmonton, AB

Welcome home to this clean, great looking 2-storey end unit Townhouse facing the ravine and walking trails. Has one of the best locations in complex. Low condo fees. This marvelous 2-storey home has 3 bedrooms and 2.5 baths. Built in 2015, this home boasts open concept main floor featuring laminate flooring. A modern kitchen espresso cabinets, quartz countertops, stainless steel appliances and an electric fireplace. You will also find a 2-pc bath and main floor laundry for your convenience. The upper level contains 3 bedrooms, 4-pc bath and 3-pc ensuite. Also, there is a double attached garage. Ample visitor parking behind the unit. Shopping, schools, and transportation nearby. Enjoy quiet evenings on your front patio overlooking the ravine.

Built in 2015

Essential Information

MLS® #	E4442670
Price	\$329,900
Bedrooms	3
Bathrooms	2.50
Full Baths	2
Half Baths	1
Square Footage	1,179
Acres	0.00



Year Built	2015
Type	Condo / Townhouse
Sub-Type	Townhouse
Style	2 Storey
Status	Active

Community Information

Address	24 415 Clareview Road
Area	Edmonton
Subdivision	Kernohan
City	Edmonton
County	ALBERTA
Province	AB
Postal Code	T5A 0Z6

Amenities

Amenities	Detectors Smoke, Hot Water Instant, Hot Water Tankless, See Remarks
Parking	Double Garage Attached

Interior

Interior Features	ensuite bathroom
Appliances	Dishwasher-Built-In, Dryer, Garage Control, Garage Opener, Microwave Hood Fan, Refrigerator, Stove-Electric, Washer, Window Coverings
Heating	Forced Air-1, Natural Gas
Fireplace	Yes
Fireplaces	Freestanding, See Remarks
Stories	3
Has Basement	Yes
Basement	Partial, Finished

Exterior

Exterior	Wood, Vinyl
Exterior Features	Fenced, Landscaped, Playground Nearby, Public Transportation, Ravine View, Schools, Shopping Nearby
Roof	Asphalt Shingles
Construction	Wood, Vinyl
Foundation	Concrete Perimeter

Additional Information

Date Listed	June 16th, 2025
Days on Market	1
Zoning	Zone 35
Condo Fee	\$258

DATA IS DEEMED RELIABLE BUT IS NOT GUARANTEED ACCURATE BY THE REALTORS® ASSOCIATION OF EDMONTON. COPYRIGHT 2025 BY THE REALTORS® ASSOCIATION OF EDMONTON. ALL RIGHTS RESERVED. Trademarks are owned or controlled by the Canadian Real Estate Association (CREA) and identify real estate professionals who are members of CREA (REALTOR®, REALTORS®) and/or the quality of services they provide (MLS®, Multiple Listing Service®)

Listing information last updated on June 17th, 2025 at 3:47am MDT