

\$429,900 - 3806 85 Street, Edmonton

MLS® #E4442274

\$429,900

4 Bedroom, 2.00 Bathroom, 1,035 sqft

Single Family on 0.00 Acres

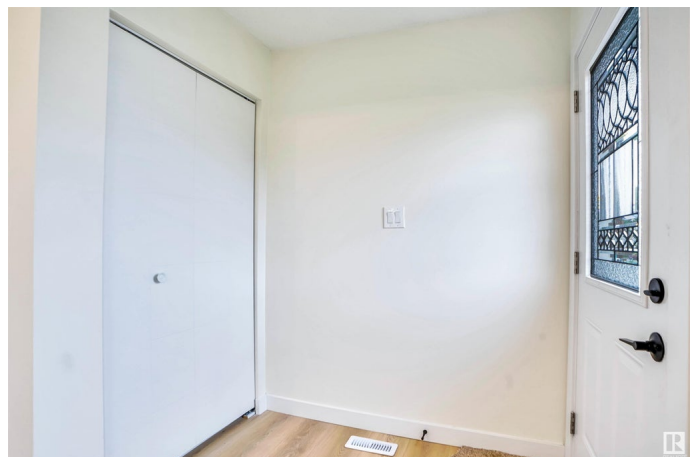
Richfield, Edmonton, AB

FINISHED BASEMENT With Separate Entrance! 2058 SQFT of combined Living Space on a lot of 4465 SQFT. Fully Renovated house, upstairs and Basement. Basement comes with a Separate Entrance, High ceiling, its own dedicated Laundry, Full Kitchen and 1 Huge Bedroom with 2 Windows and 2 Closets. Upstairs consists of 3 Bedrooms, 1 Full Washroom, Separate Laundry and a Full set of NEW Kitchen Appliances. Duplex is also equipped with a High-Efficiency Furnace, a Tankless Hot Water System, a new Roof, and New Windows, all installed in 2019. The property features a new concrete pad in front, a vast Backyard, and Green space just across the street. Fully fenced large backyard comes with a Deck. Walking distance to the Schools, Church and Mosque. ? Move-in Ready! Live and Rent, or bring the whole family under one roof.

Built in 1972

Essential Information

MLS® #	E4442274
Price	\$429,900
Bedrooms	4
Bathrooms	2.00
Full Baths	2
Square Footage	1,035



Acres	0.00
Year Built	1972
Type	Single Family
Sub-Type	Half Duplex
Style	Bungalow
Status	Active

Community Information

Address	3806 85 Street
Area	Edmonton
Subdivision	Richfield
City	Edmonton
County	ALBERTA
Province	AB
Postal Code	T6K 0H6

Amenities

Amenities	Carbon Monoxide Detectors, Hot Water Tankless
Parking	Front Drive Access, No Garage

Interior

Appliances	Dishwasher-Built-In, Microwave Hood Fan, Storage Shed, Dryer-Two, Refrigerators-Two, Stoves-Two, Washers-Two
Heating	Forced Air-1, Natural Gas
Stories	2
Has Suite	Yes
Has Basement	Yes
Basement	Full, Finished

Exterior

Exterior	See Remarks, Brick
Exterior Features	Fenced, No Back Lane, Playground Nearby, Public Transportation, Schools, Shopping Nearby
Roof	Asphalt Shingles
Construction	See Remarks, Brick
Foundation	See Remarks

School Information

Elementary	Grace Martin Sch K- 6
------------	-----------------------

Middle	Edith Rogers Sch 7- 9
High	W.P. Wagner Sch 10- 12

Additional Information

Date Listed	June 13th, 2025
Days on Market	5
Zoning	Zone 29

DATA IS DEEMED RELIABLE BUT IS NOT GUARANTEED ACCURATE BY THE REALTORS® ASSOCIATION OF EDMONTON. COPYRIGHT 2025 BY THE REALTORS® ASSOCIATION OF EDMONTON. ALL RIGHTS RESERVED. Trademarks are owned or controlled by the Canadian Real Estate Association (CREA) and identify real estate professionals who are members of CREA (REALTOR®, REALTORS®) and/or the quality of services they provide (MLS®, Multiple Listing Service®)

Listing information last updated on June 17th, 2025 at 10:02pm MDT