

\$698,000 - 56 Riverhill Crescent, St. Albert

MLS® #E4439511

\$698,000

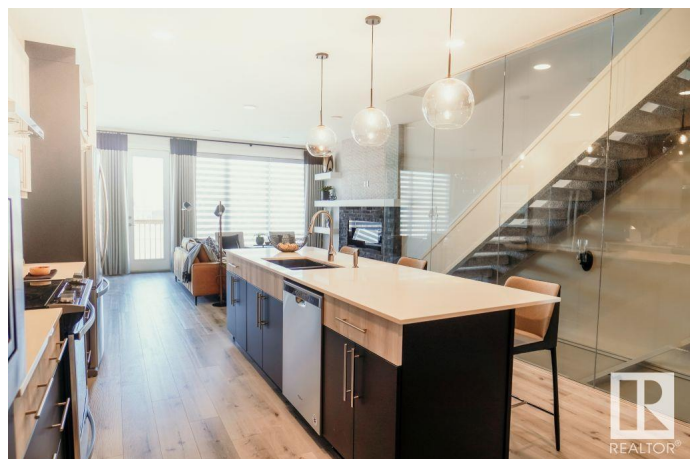
3 Bedroom, 2.50 Bathroom, 2,408 sqft

Single Family on 0.00 Acres

Riverside (St. Albert), St. Albert, AB

The Flair 26 is designed w/ hosting & day to day function in mind. The exterior has a modern elevation, inside the shade interior style brings a clam refined palette. At the front of the home, a dedicated family entrance with built in storage helps keep clutter out of the main living area. Just off the entrance the walk-in pantry leads directly into the central kitchen, where an oversized island anchors the space & offers plenty of room for prep & conversation. At the back of the home, the kitchen flows into a large dinning area & bright living room w/ a full-height glass wall & modern electric fireplace. Off the dinning area a main floor den gives you a separate space that can be used for focus or retreat – away from the main activity of the home. Upstairs a central bonus room creates a gathering place that separates the 2 generously sized bedrooms & primary suite. The Primary bedroom features a large walk-in closet and an ensuite with double sinks and thoughtful finishes.

Built in 2025



Essential Information

MLS® #	E4439511
Price	\$698,000
Bedrooms	3
Bathrooms	2.50

Full Baths	2
Half Baths	1
Square Footage	2,408
Acres	0.00
Year Built	2025
Type	Single Family
Sub-Type	Detached Single Family
Style	2 Storey
Status	Active

Community Information

Address	56 Riverhill Crescent
Area	St. Albert
Subdivision	Riverside (St. Albert)
City	St. Albert
County	ALBERTA
Province	AB
Postal Code	T8N 7X4

Amenities

Amenities	Closet Organizers, Detectors Smoke, No Animal Home, No Smoking Home, Smart/Program. Thermostat, See Remarks
Parking	Double Garage Attached

Interior

Interior Features	ensuite bathroom
Appliances	Dishwasher-Built-In, Hood Fan, Oven-Microwave, Refrigerator, Stove-Electric
Heating	Forced Air-1, Natural Gas
Stories	2
Has Basement	Yes
Basement	Full, Unfinished

Exterior

Exterior	Wood, Vinyl
Exterior Features	Flat Site, Level Land, Playground Nearby, Schools, Shopping Nearby, See Remarks
Roof	Asphalt Shingles
Construction	Wood, Vinyl

Foundation Concrete Perimeter

Additional Information

Date Listed May 29th, 2025
Days on Market 19
Zoning Zone 24



DATA IS DEEMED RELIABLE BUT IS NOT GUARANTEED ACCURATE BY THE REALTORS® ASSOCIATION OF EDMONTON. COPYRIGHT 2025 BY THE REALTORS® ASSOCIATION OF EDMONTON. ALL RIGHTS RESERVED.Trademarks are owned or controlled by the Canadian Real Estate Association (CREA) and identify real estate professionals who are members of CREA (REALTOR®, REALTORS®) and/or the quality of services they provide (MLS®, Multiple Listing Service®)
Listing information last updated on June 17th, 2025 at 8:32pm MDT