

# \$299,900 - 1938 59 Ave, Rural Leduc County

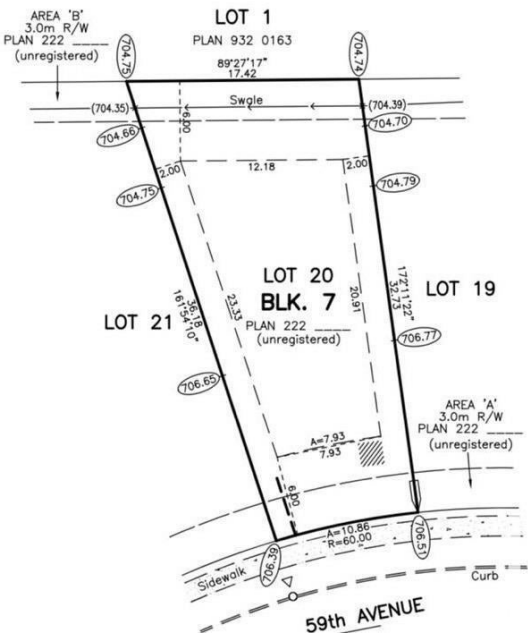
MLS® #E4439175

**\$299,900**

0 Bedroom, 0.00 Bathroom,  
Rural on 0.12 Acres

Irvine Creek, Rural Leduc County, AB

Construct your dream home on a large 3pie shaped Walk Out Lot to beautiful Pond in the Irvine Creek. Exceptional lot with FULL municipal services, City water, City Sewer, Gas, Power and High speed internet in a Developed subdivision. You can hire your own builder or can build your own. 30 feet Building Pocket surrounded by high end custom homes. Minutes to Beaumont, Edmonton, Nisku, Leduc and Edmonton Int' Airport.



## Essential Information

|           |                 |
|-----------|-----------------|
| MLS® #    | E4439175        |
| Price     | \$299,900       |
| Bathrooms | 0.00            |
| Acres     | 0.12            |
| Type      | Rural           |
| Sub-Type  | Vacant Lot/Land |
| Status    | Active          |

## Community Information

|             |                    |
|-------------|--------------------|
| Address     | 1938 59 Ave        |
| Area        | Rural Leduc County |
| Subdivision | Irvine Creek       |
| City        | Rural Leduc County |
| County      | ALBERTA            |
| Province    | AB                 |
| Postal Code | T4X 3C4            |

**Exterior**

Exterior Features    Airport Nearby, Shopping Nearby, See Remarks

**Additional Information**

Date Listed                May 29th, 2025

Days on Market        67

Zoning                    Zone 80

DATA IS DEEMED RELIABLE BUT IS NOT GUARANTEED ACCURATE BY THE REALTORS® ASSOCIATION OF EDMONTON. COPYRIGHT 2025 BY THE REALTORS® ASSOCIATION OF EDMONTON. ALL RIGHTS RESERVED.Trademarks are owned or controlled by the Canadian Real Estate Association (CREA) and identify real estate professionals who are members of CREA (REALTOR®, REALTORS®) and/or the quality of services they provide (MLS®, Multiple Listing Service®)

Listing information last updated on August 4th, 2025 at 7:17am MDT