

# **\$620,000 - 181 52009 Rge Road 214, Rural Strathcona County**

MLS® #E4436893

## **\$620,000**

4 Bedroom, 3.00 Bathroom, 1,706 sqft

Rural on 2.97 Acres

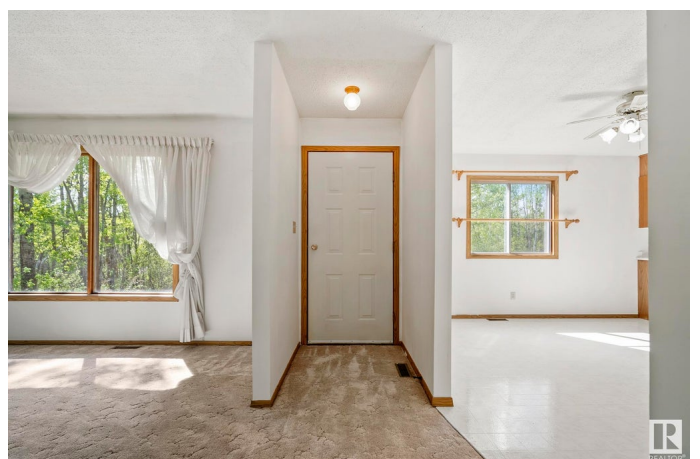
Wildwood Village, Rural Strathcona County, AB

Peaceful acreage living in Wildwood Village! This well maintained 1700 sq ft bungalow sits on a beautifully treed property offering privacy and space to roam. Inside, youâ€™™ll find a bright and functional kitchen, open dining area, and a spacious living room with a cozy stone fireplace. The king-sized primary suite features a 3-pc ensuite and patio doors leading to a private balcony. Two additional bedrooms, a 4-pc bath, and a laundry-equipped mudroom complete the main level. The finished basement adds a massive rec room with fireplace, full bath, fourth bedroom, and storage room. Enjoy the attached double garage plus a 32x48 Quonset with concrete floorsâ€™™perfect for your recreation vehicles or next project. A true gem with pride of ownership throughout!

Built in 1990

## **Essential Information**

MLS® #	E4436893
Price	\$620,000
Bedrooms	4
Bathrooms	3.00
Full Baths	3



Square Footage	1,706
Acres	2.97
Year Built	1990
Type	Rural
Sub-Type	Detached Single Family
Style	Bungalow
Status	Active

### Community Information

Address	181 52009 Rge Road 214
Area	Rural Strathcona County
Subdivision	Wildwood Village
City	Rural Strathcona County
County	ALBERTA
Province	AB
Postal Code	T8E 1A2

### Amenities

Features	See Remarks
----------	-------------

### Interior

Interior Features	ensuite bathroom
Heating	Forced Air-1, Natural Gas
Stories	2
Has Basement	Yes
Basement	Full, Finished

### Exterior

Exterior	Wood
Exterior Features	See Remarks
Construction	Wood
Foundation	Concrete Perimeter

### Additional Information

Date Listed	May 15th, 2025
Days on Market	81
Zoning	Zone 80

DATA IS DEEMED RELIABLE BUT IS NOT GUARANTEED ACCURATE BY THE REALTORS® ASSOCIATION OF EDMONTON. COPYRIGHT 2025 BY THE REALTORS® ASSOCIATION OF EDMONTON. ALL RIGHTS RESERVED. Trademarks are owned or controlled by the Canadian Real Estate Association (CREA) and identify real

estate professionals who are members of CREA (REALTOR®®, REALTORS®®) and/or the quality of services they provide (MLS®®, Multiple Listing Service®®)

Listing information last updated on August 4th, 2025 at 3:17pm MDT