

# **\$779,900 - 86 51042 Rge Road 204, Rural Strathcona County**

MLS® #E4434122

**\$779,900**

4 Bedroom, 3.00 Bathroom, 1,840 sqft

Rural on 8.97 Acres

Trans Oak Estates, Rural Strathcona County, AB

Private country living at its finest, this custom built 1840 SQFT Ranch style Bungalow offers 8.97 acres of rolling land. Roughly 3 acres is fully fenced with private walking trails throughout the rest of the property.

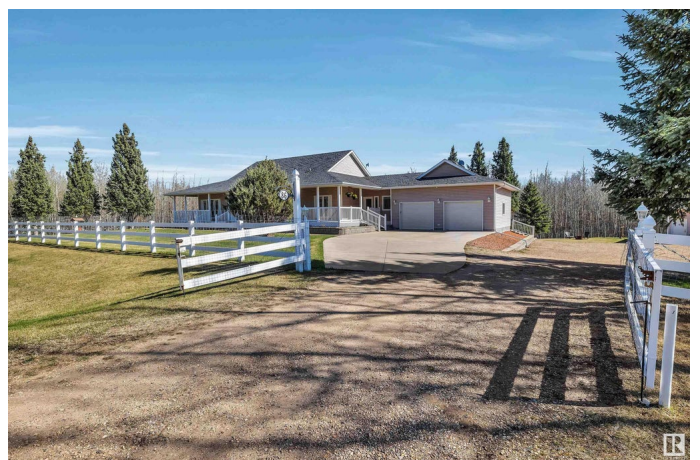
Maintenance free wrap around deck, and ample garage space with an oversized heated attached garage & a triple oversized heated detached garage/shop! Open concept living with a country sized kitchen that leads into the dining/living room area complete with a gas fireplace. Large family room with access to the wrap around deck, king sized master bedroom with ensuite, 2nd bedroom, and main floor laundry room with laundry sink & a large side entry leading to the finished Breezeway. The newly finished walkout basement features 2 bedrooms, entertainment room, and a 3 piece bath. Upgrades include all new stainless steel appliances, quartz countertops, flooring, light fixtures, water treatment system, and a high end septic system. Great location close to Hwy 14 & steps from Hasting Lake Hall

Built in 1998

## **Essential Information**

MLS® #

E4434122



Price	\$779,900
Bedrooms	4
Bathrooms	3.00
Full Baths	3
Square Footage	1,840
Acres	8.97
Year Built	1998
Type	Rural
Sub-Type	Detached Single Family
Style	Hillside Bungalow
Status	Active

### Community Information

Address	86 51042 Rge Road 204
Area	Rural Strathcona County
Subdivision	Trans Oak Estates
City	Rural Strathcona County
County	ALBERTA
Province	AB
Postal Code	T8G 1E3

### Amenities

Features	Deck, Front Porch, No Smoking Home, Walkout Basement, See Remarks
----------	---

### Interior

Interior Features	ensuite bathroom
Heating	Forced Air-1, Natural Gas
Fireplace	Yes
Stories	2
Has Basement	Yes
Basement	Full, Finished

### Exterior

Exterior	Wood
Exterior Features	Fenced, Golf Nearby, Hillside, Landscaped, Playground Nearby, Private Setting, See Remarks
Construction	Wood
Foundation	Concrete Perimeter

**Additional Information**

Date Listed            May 2nd, 2025  
Days on Market       5  
Zoning                 Zone 80

DATA IS DEEMED RELIABLE BUT IS NOT GUARANTEED ACCURATE BY THE REALTORS® ASSOCIATION OF EDMONTON. COPYRIGHT 2025 BY THE REALTORS® ASSOCIATION OF EDMONTON. ALL RIGHTS RESERVED.Trademarks are owned or controlled by the Canadian Real Estate Association (CREA) and identify real estate professionals who are members of CREA (REALTOR®, REALTORS®) and/or the quality of services they provide (MLS®, Multiple Listing Service®)  
Listing information last updated on May 7th, 2025 at 12:03am MDT