

\$299,900 - 45 655 Tamarack Road, Edmonton

MLS® #E4433886

\$299,900

3 Bedroom, 2.50 Bathroom, 1,274 sqft

Condo / Townhouse on 0.00 Acres

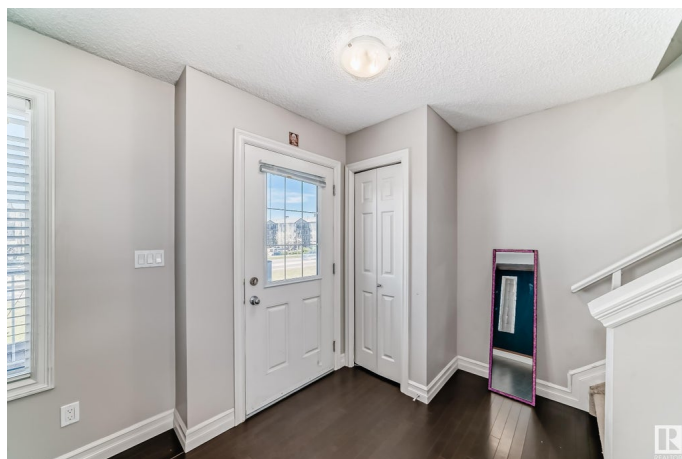
Tamarack, Edmonton, AB

Welcome to spectacular townhouse in TAMARACK. This LANDMARK HIGH EFFICIENCY GREEN STANDARD townhome comes with 3 BEDROOMS, 2.5 BATHROOMS, FENCED FRONT YARD and DOUBLE ATTACHED GARAGE. The kitchen has all the upgrades including stainless steel appliances, tile back splash, lots of counter top and cabinet space and includes a built in pantry. LARGE WINDOWS & BRIGHT Main floor also has a 2 piece washroom and a separate laundry room. There are 3 bedrooms upstairs all with double closets & master bedroom with great closet space and 2 full bathrooms (ensuite and main bath). On-Demand hot water tank. LOW CONDO FEES that includes SNOW REMOVAL & LAWN CUTTING !! GREAT LOCATION !! WALKING DISTANCE to nearby shopping including Walmart , Superstore , Public Transit , Gym. Also quick access to Whitemud Freeway & Anthony Henday Drive.

Built in 2013

Essential Information

MLS® #	E4433886
Price	\$299,900
Bedrooms	3
Bathrooms	2.50



Full Baths	2
Half Baths	1
Square Footage	1,274
Acres	0.00
Year Built	2013
Type	Condo / Townhouse
Sub-Type	Townhouse
Style	2 Storey
Status	Active

Community Information

Address	45 655 Tamarack Road
Area	Edmonton
Subdivision	Tamarack
City	Edmonton
County	ALBERTA
Province	AB
Postal Code	T6T 0N4

Amenities

Amenities	Deck, No Animal Home, No Smoking Home, Patio, Secured Parking, See Remarks
Parking	Double Garage Attached

Interior

Interior Features	ensuite bathroom
Appliances	Dishwasher-Built-In, Dryer, Microwave Hood Fan, Refrigerator, Stove-Electric, Washer, Window Coverings
Heating	Forced Air-1, Natural Gas
Stories	3
Has Basement	Yes
Basement	Full, Partially Finished

Exterior

Exterior	Wood, Vinyl
Exterior Features	Fenced, Landscaped, Low Maintenance Landscape, Paved Lane, See Remarks
Roof	Asphalt Shingles
Construction	Wood, Vinyl

Foundation Concrete Perimeter

Additional Information

Date Listed May 1st, 2025
Days on Market 2
Zoning Zone 30
Condo Fee \$265

DATA IS DEEMED RELIABLE BUT IS NOT GUARANTEED ACCURATE BY THE REALTORS® ASSOCIATION OF EDMONTON. COPYRIGHT 2025 BY THE REALTORS® ASSOCIATION OF EDMONTON. ALL RIGHTS RESERVED.Trademarks are owned or controlled by the Canadian Real Estate Association (CREA) and identify real estate professionals who are members of CREA (REALTOR®, REALTORS®) and/or the quality of services they provide (MLS®, Multiple Listing Service®)
Listing information last updated on May 2nd, 2025 at 11:32pm MDT