

\$199,900 - 330 530 Hooke Road, Edmonton

MLS® #E4433238

\$199,900

1 Bedroom, 1.00 Bathroom, 915 sqft

Condo / Townhouse on 0.00 Acres

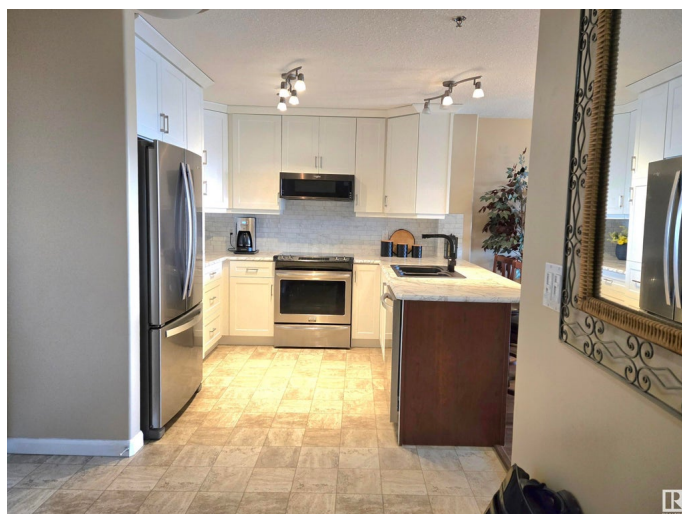
Canon Ridge, Edmonton, AB

Beautiful 1 Bedroom + Den with spectacular view over looking Hermitage Park and Ravine. Significantly remodelled with Over Counter to Ceiling White Cabinets and Backsplash. All New Stainless Steel Appliances with the latest sleek designed Microwave Hood Fan and French Door Refrigerator. The Living Room floods with light through Large Windows. Stay cool all summer with a built in Central Air System. Primary Bedroom has a stylish Accent Wall and Walkthrough Closet chaulk full of Organizers . No Carpet Unit. Comes with Insuite Washer/Dryer. Laundry Cabinet keeps that area neat and tidy. This is an Adult Only Building with Fantastic Amenities that allows you to make friends fast. Social and Exercise Rooms with usable weights, Libraries and Puzzle Exchanges. Relax in luxury overlooking the North Saskatchewan. Call this your home.

Built in 2004

Essential Information

MLS® #	E4433238
Price	\$199,900
Bedrooms	1
Bathrooms	1.00
Full Baths	1
Square Footage	915



Acres	0.00
Year Built	2004
Type	Condo / Townhouse
Sub-Type	Lowrise Apartment
Style	Single Level Apartment
Status	Active

Community Information

Address	330 530 Hooke Road
Area	Edmonton
Subdivision	Canon Ridge
City	Edmonton
County	ALBERTA
Province	AB
Postal Code	T5A 5J5

Amenities

Amenities	Exercise Room, Sauna; Swirlpool; Steam, Social Rooms
Parking	Stall
Is Waterfront	Yes

Interior

Appliances	Air Conditioning-Central, Dishwasher-Built-In, Microwave Hood Fan, Refrigerator, Stacked Washer/Dryer, Window Coverings, Stove-Countertop Inductn
Heating	Forced Air-1, Natural Gas
# of Stories	4
Stories	4
Has Basement	Yes
Basement	See Remarks, No Basement

Exterior

Exterior	Wood, Stone, Stucco
Exterior Features	Backs Onto Lake, Backs Onto Park/Trees, Landscaped, Private Setting, Public Transportation, Ravine View, Schools, Shopping Nearby, Treed Lot
Roof	Asphalt Shingles
Construction	Wood, Stone, Stucco
Foundation	Concrete Perimeter

Additional Information

Date Listed	April 28th, 2025
Days on Market	9
Zoning	Zone 35
Condo Fee	\$535

DATA IS DEEMED RELIABLE BUT IS NOT GUARANTEED ACCURATE BY THE REALTORS® ASSOCIATION OF EDMONTON. COPYRIGHT 2025 BY THE REALTORS® ASSOCIATION OF EDMONTON. ALL RIGHTS RESERVED.Trademarks are owned or controlled by the Canadian Real Estate Association (CREA) and identify real estate professionals who are members of CREA (REALTOR®, REALTORS®) and/or the quality of services they provide (MLS®, Multiple Listing Service®)

Listing information last updated on May 6th, 2025 at 11:47pm MDT