

\$235,000 - 13216 38 St Nw, Edmonton

MLS® #E4432590

\$235,000

4 Bedroom, 2.00 Bathroom, 933 sqft
Single Family on 0.10 Acres

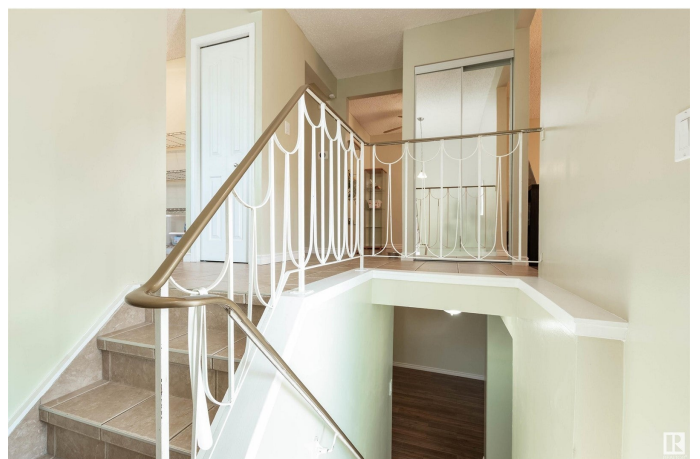
Belmont, Edmonton, Alberta

Bright and well-maintained half duplex near Kennedale Ravine! This 2+2 bedroom home features an updated kitchen with new counters, refreshed cabinets, and a newer dishwasher. The living and dining area is filled with natural light. The main bath offers dual sinks, a skylight, good storage, and a bright, modern feel. The primary bedroom has hardwood floors, a large closet with organizer, and sliding doors leading to a low-maintenance backyard with a stone patio—perfect for summer BBQs and entertaining. The fully finished basement includes brand new flooring, a spacious family room, bright bonus room, 3-piece bath, and a large bedroom with generous closet space. Also includes a large storage room, shed, and no back lane. Close to walking trails, schools, shopping, transit, and major routes. Plus—awesome neighbours! (id:36535)

Built in 1976

Essential Information

Listing #	E4432590
Price	\$235,000
Bedrooms	4
Bathrooms	2.00
Square Footage	933
Acres	0.10
Year Built	1976
Type	Single Family



Sub-Type	Freehold
Style	Bungalow

Community Information

Address	13216 38 St Nw
Subdivision	Belmont
City	Edmonton
Province	Alberta
Postal Code	T5A3G4

Amenities

Amenities	Playground, Public Transit, Schools, Shopping
Features	Flat site, No back lane, Park/reserve, Closet Organizers, No Smoking Home, Skylight
Parking Spaces	2

Interior

Appliances	Dishwasher, Dryer, Refrigerator, Washer, Window Coverings
Heating	Forced air
# of Stories	1
Has Basement	Yes
Basement Type	Full (Partially finished)
Basement Development	Partially finished

Listing Details

Listing Office	Courtesy Of Craig E. Finnman Of Royal LePage Prestige Realty
----------------	--



The trademarks MLS®, Multiple Listing Service® and the associated logos are owned by The Canadian Real Estate Association (CREA) and identify the quality of services provided by real estate professionals who are members of CREA. REALTOR®. Member of CREA and more.

Listing information last updated on May 7th, 2025 at 1:32am MDT