

\$0 - 4612 4614 101 Street, Edmonton

MLS® #E4432174

\$0

0 Bedroom, 0.00 Bathroom,
Industrial on 0.00 Acres

Papaschase Industrial, Edmonton, AB

• Comes with dedicated secured yard space
• (2) 12' x 14' overhead doors
• Fibre optics available
• Located in one of the principle commercial nodes in Edmonton with convenient access to the Whitemud, Calgary Trail & Gateway Blvd, and Anthony Henday Drive

Built in 1977

Essential Information

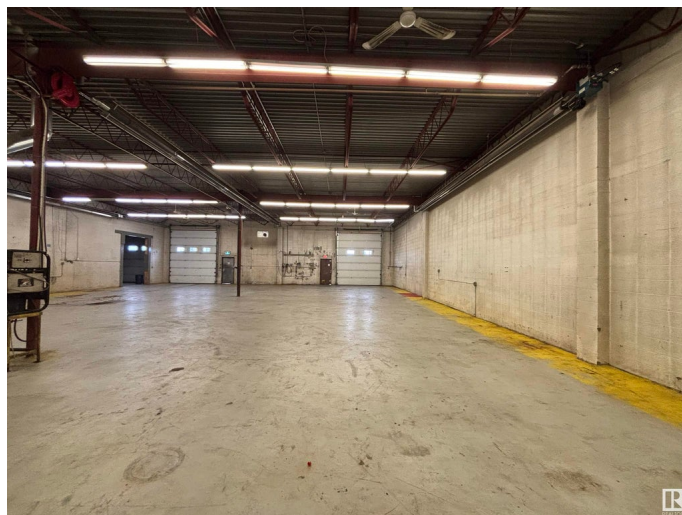
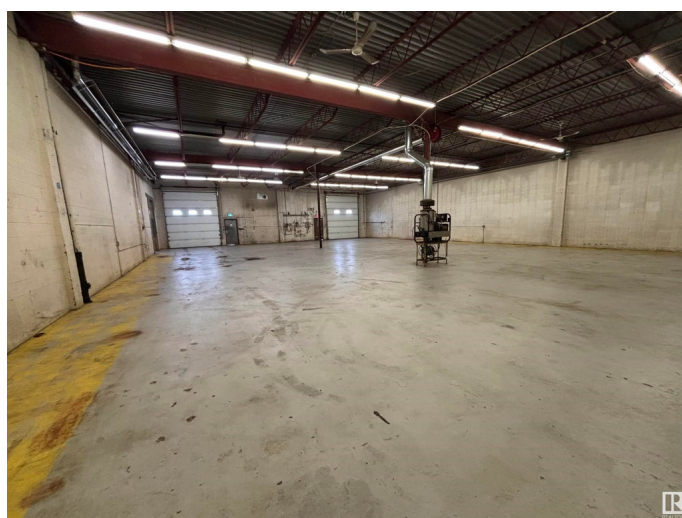
| | |
|------------|------------|
| MLS® # | E4432174 |
| Bathrooms | 0.00 |
| Acres | 0.00 |
| Year Built | 1977 |
| Type | Industrial |
| Status | Active |

Community Information

| | |
|-------------|-----------------------|
| Address | 4612 4614 101 Street |
| Area | Edmonton |
| Subdivision | Papaschase Industrial |
| City | Edmonton |
| County | ALBERTA |
| Province | AB |
| Postal Code | T6E 5G9 |

Exterior

| | |
|----------|-------|
| Exterior | Mixed |
|----------|-------|



Construction Mixed

Additional Information

Date Listed April 22nd, 2025

Days on Market 104

Zoning Zone 41

DATA IS DEEMED RELIABLE BUT IS NOT GUARANTEED ACCURATE BY THE REALTORS® ASSOCIATION OF EDMONTON. COPYRIGHT 2025 BY THE REALTORS® ASSOCIATION OF EDMONTON. ALL RIGHTS RESERVED.Trademarks are owned or controlled by the Canadian Real Estate Association (CREA) and identify real estate professionals who are members of CREA (REALTOR®, REALTORS®) and/or the quality of services they provide (MLS®, Multiple Listing Service®)

Listing information last updated on August 4th, 2025 at 6:32pm MDT