

\$399,800 - 8519 81 Avenue, Edmonton

MLS® #E4431031

\$399,800

0 Bedroom, 0.00 Bathroom,
Single Family on 0.00 Acres

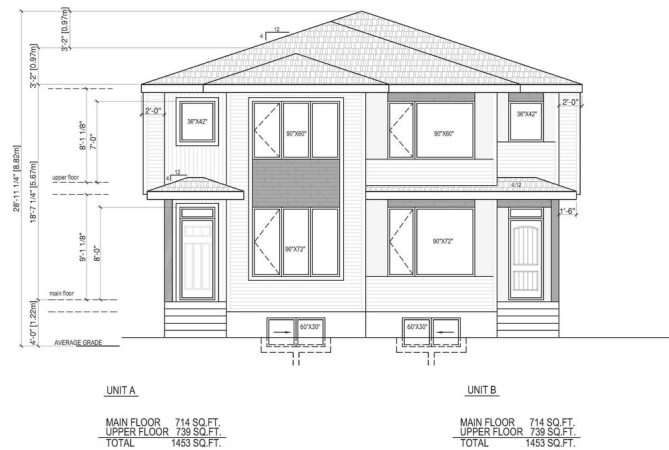
King Edward Park, Edmonton, AB

Investor and Builder Alert! GEM in King
Edward Park! 42' x 130' Lot. Could be qualified
for CMHC program.



Essential Information

MLS® #	E4431031
Price	\$399,800
Bathrooms	0.00
Acres	0.00
Type	Single Family
Sub-Type	Vacant Lot/Land
Status	Active



Community Information

Address	8519 81 Avenue
Area	Edmonton
Subdivision	King Edward Park
City	Edmonton
County	ALBERTA
Province	AB
Postal Code	T6C 0W3

Exterior

Exterior Features Playground Nearby, Public Transportation, Schools, Shopping Nearby

Additional Information

Date Listed April 15th, 2025

Days on Market 21

Zoning Zone 17

DATA IS DEEMED RELIABLE BUT IS NOT GUARANTEED ACCURATE BY THE REALTORS® ASSOCIATION OF EDMONTON. COPYRIGHT 2025 BY THE REALTORS® ASSOCIATION OF EDMONTON. ALL RIGHTS RESERVED. Trademarks are owned or controlled by the Canadian Real Estate Association (CREA) and identify real estate professionals who are members of CREA (REALTOR®, REALTORS®) and/or the quality of services they provide (MLS®, Multiple Listing Service®)

Listing information last updated on May 6th, 2025 at 3:47pm MDT