

\$375,000 - 14 1530 Tamarack Boulevard, Edmonton

MLS® #E4430706

\$375,000

2 Bedroom, 2.50 Bathroom, 1,301 sqft
Condo / Townhouse on 0.00 Acres

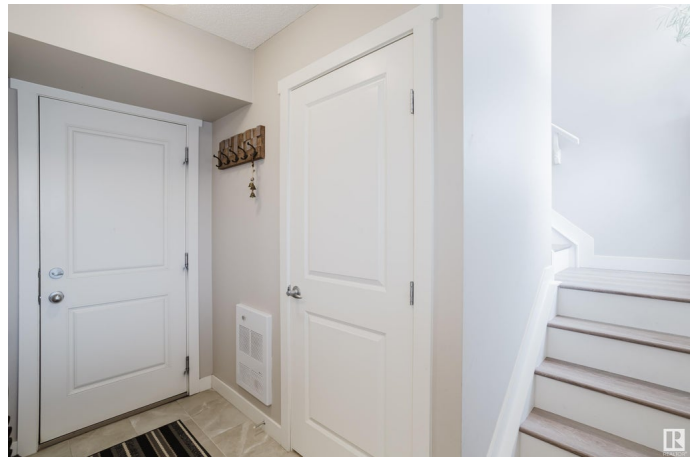
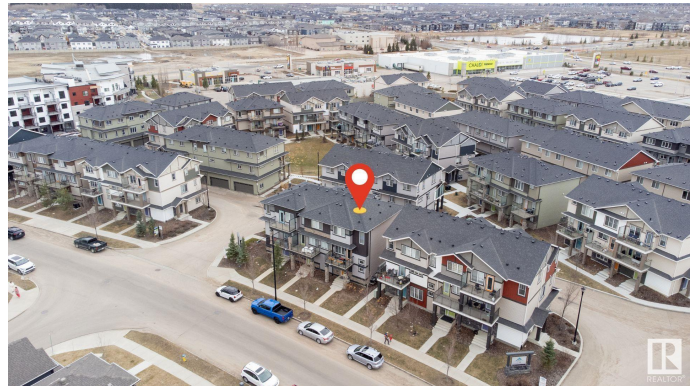
Tamarack, Edmonton, AB

Welcome! Let me introduce you to this lovely former SHOW HOME, featuring a spacious 2-bedroom, 2.5-bathroom condo with 1,300 square feet of elegant living space. Ideal for comfortable living the upper levels of the Unit are bright and open, with a modern color palate throughout. The Kitchen has gorgeous UPGRADED cabinetry, full appliances, peninsula style island, and WALK-IN-PANTRY. The dining and living areas of this open concept blend seamlessly together, making it perfect for entertaining. The Balcony access is off the living room, and leads out to a cozy space. Upstairs you will find 2 MASTER-BEDROOMS, each with an ensuite and great closet space. Complete the package with a DOUBLE ATTACHED GARAGE and Central Air Conditioner. Close to Shopping, Schools, Transit and so much more.

Built in 2016

Essential Information

MLS® #	E4430706
Price	\$375,000
Bedrooms	2
Bathrooms	2.50
Full Baths	2
Half Baths	1



Square Footage	1,301
Acres	0.00
Year Built	2016
Type	Condo / Townhouse
Sub-Type	Townhouse
Style	3 Storey
Status	Active

Community Information

Address	14 1530 Tamarack Boulevard
Area	Edmonton
Subdivision	Tamarack
City	Edmonton
County	ALBERTA
Province	AB
Postal Code	T6T 2E6

Amenities

Amenities	Air Conditioner, No Animal Home
Parking	Double Garage Attached

Interior

Interior Features	ensuite bathroom
Appliances	Air Conditioning-Central, Dishwasher-Built-In, Dryer, Garage Control, Garage Opener, Microwave Hood Fan, Refrigerator, Stove-Electric, Washer, Window Coverings
Heating	Forced Air-1, Natural Gas
Stories	3
Has Basement	Yes
Basement	None, No Basement

Exterior

Exterior	Wood, Vinyl
Exterior Features	Airport Nearby, Playground Nearby, Schools, Shopping Nearby, See Remarks
Roof	Asphalt Shingles
Construction	Wood, Vinyl
Foundation	Concrete Perimeter

Additional Information

Date Listed	April 14th, 2025
Days on Market	22
Zoning	Zone 30
Condo Fee	\$232

DATA IS DEEMED RELIABLE BUT IS NOT GUARANTEED ACCURATE BY THE REALTORS® ASSOCIATION OF EDMONTON. COPYRIGHT 2025 BY THE REALTORS® ASSOCIATION OF EDMONTON. ALL RIGHTS RESERVED. Trademarks are owned or controlled by the Canadian Real Estate Association (CREA) and identify real estate professionals who are members of CREA (REALTOR®, REALTORS®) and/or the quality of services they provide (MLS®, Multiple Listing Service®)

Listing information last updated on May 6th, 2025 at 6:02pm MDT