

## **\$1,368,800 - 5819 28 Street, Rural Leduc County**

MLS® #E4429356

**\$1,368,800**

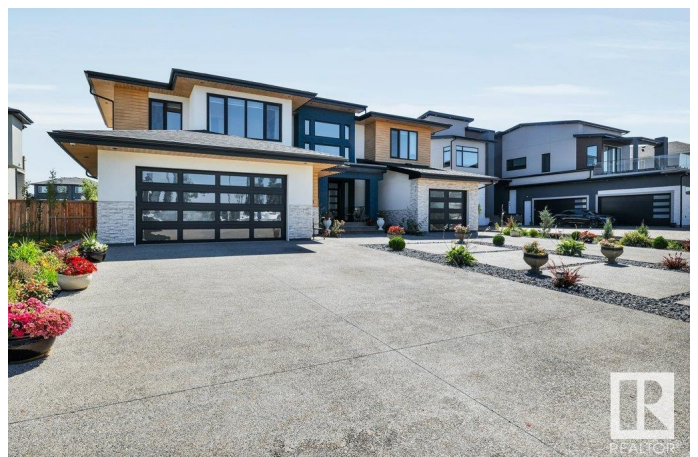
6 Bedroom, 4.50 Bathroom, 3,566 sqft

Rural on 0.33 Acres

Diamond Estates\_LEDU, Rural Leduc County,  
AB

Welcome to Diamond Estates in Leduc County! This MAGNIFICENT MANSION on a 0.33 acre lot is a work of art! Boasting a total living space of over 3565 sqft + over 1539 sqft of FULLY FINISHED BASEMENT, 7 FIREPLACES, 6 BDRMS, 4.5 baths,& 2 STEAM SHOWERS, this home sits you in the lap of luxury! The large foyer brings you into MODERN OPULENCE w/ a GRAND LIVING ROOM w/ a ONE-OF-A-KIND GAS FIREPLACE OVERLOOKING the HOLLYWOOD-type BACKYARD lined w/ POPLAR TREES plus a LARGE PATIO, & A PARADE OF BUILT-IN NIGHT LIGHTS,a spacious dining area w/ 20 ft CEILINGS above & a DREAM ISLAND KITCHEN W/ HIGH-END SS APPLIANCES w/ a DOWNDRAFT COUNTERTOP GAS STOVE, a BUILT-IN COFFEE MAKER & MICROWAVE OVEN, BRAZILIAN QUARTZ COUNTERTOPS, WALK-IN PANTRY& MODERN CABINETRY!A spreadout MUDROOM, OFFICE &2-pc BATH completes the main floor elysium! Upstairs offers w/ 3 large bdrms overlooking the GREEN VIEW, 3 full baths, w/2 ENSUITES, BONUS RM,BAR,DEN & LAUNDRY RM! The BSMT offers 3 BDRMS, 3-pc Bath, 2ND LAUNDRY RM, REC RM & BAR !

Built in 2017



## Essential Information

MLS® #	E4429356
Price	\$1,368,800
Bedrooms	6
Bathrooms	4.50
Full Baths	4
Half Baths	1
Square Footage	3,566
Acres	0.33
Year Built	2017
Type	Rural
Sub-Type	Detached Single Family
Style	2 Storey
Status	Active

## Community Information

Address	5819 28 Street
Area	Rural Leduc County
Subdivision	Diamond Estates_LEDU
City	Rural Leduc County
County	ALBERTA
Province	AB
Postal Code	T4X 0X5

## Amenities

Features	Bar, Ceiling 10 ft., Closet Organizers, Deck, Fire Pit, Front Porch, Patio, Wet Bar, See Remarks
Parking Spaces	7

## Interior

Interior Features	ensuite bathroom
Heating	Forced Air-2, Natural Gas
Fireplace	Yes
Stories	3
Has Basement	Yes
Basement	Full, Finished

## Exterior

Exterior	Wood
----------	------

Exterior Features	Airport Nearby, Fenced, Flat Site, Fruit Trees/Shrubs, Landscaped, Park/Reserve, Playground Nearby, Shopping Nearby, See Remarks
Construction	Wood
Foundation	Concrete Perimeter

**Additional Information**

Date Listed	April 5th, 2025
Days on Market	30
Zoning	Zone 80

DATA IS DEEMED RELIABLE BUT IS NOT GUARANTEED ACCURATE BY THE REALTORS® ASSOCIATION OF EDMONTON. COPYRIGHT 2025 BY THE REALTORS® ASSOCIATION OF EDMONTON. ALL RIGHTS RESERVED.Trademarks are owned or controlled by the Canadian Real Estate Association (CREA) and identify real estate professionals who are members of CREA (REALTOR®, REALTORS®) and/or the quality of services they provide (MLS®, Multiple Listing Service®)

Listing information last updated on May 5th, 2025 at 8:17pm MDT