

\$219,900 - 223 5816 Mullen Place, Edmonton

MLS® #E4429331

\$219,900

2 Bedroom, 2.00 Bathroom, 760 sqft
Condo / Townhouse on 0.00 Acres

MacTaggart, Edmonton, AB

This meticulously maintained unit features an open-concept layout, TWO bedrooms, Two Baths, One Den, in-suite laundry with UNDERGROUND parking stall. The two generously sized bedrooms are on opposite sides of the expansive. The living room opens onto a spacious northwest-facing balcony. The kitchen boasts granite countertops, while vinyl plank flooring is throughout the unit. The master bedroom offers a walk-through closet leading to a private 4-piece ensuite, while the second bedroom enjoys its own dedicated 4-piece bathroom, both featuring granite countertops for a touch of sophistication. Additionally, the open den provides versatile space ideal for a home office or extra storage. This home is within walking distance to restaurants, MAJOR amenities, Jagare Ridge Golf Course, and the Anthony Henday.

Built in 2016

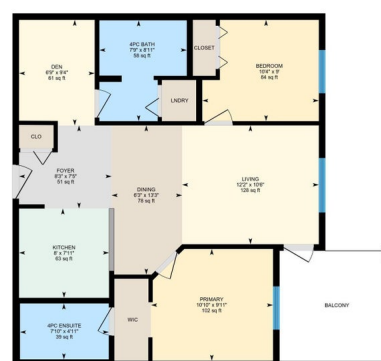
Essential Information

MLS® #	E4429331
Price	\$219,900
Bedrooms	2
Bathrooms	2.00
Full Baths	2
Square Footage	760
Acres	0.00



223-5816 Mullen Pl NW, Edmonton, AB

Main Floor Interior Area 759.87 sq ft



0 3 6 ft

PREPARED: 2025/04/05

While regions are excluded from total floor area in iGUIDE floor plans, all room dimensions and floor areas must be considered approximate and are subject to independent verification.

Year Built	2016
Type	Condo / Townhouse
Sub-Type	Lowrise Apartment
Style	Single Level Apartment
Status	Active

Community Information

Address	223 5816 Mullen Place
Area	Edmonton
Subdivision	MacTaggart
City	Edmonton
County	ALBERTA
Province	AB
Postal Code	T6R 0W3

Amenities

Amenities	Parking-Visitor, Security Door
Parking	Underground

Interior

Interior Features	ensuite bathroom
Appliances	Dishwasher-Built-In, Hood Fan, Refrigerator, Stacked Washer/Dryer, Stove-Electric, Window Coverings
Heating	Hot Water, Natural Gas
# of Stories	4
Stories	1
Has Basement	Yes
Basement	None, No Basement

Exterior

Exterior	Wood, Stone, Vinyl
Exterior Features	Golf Nearby, Playground Nearby, Public Transportation, Schools, Shopping Nearby
Roof	Asphalt Shingles
Construction	Wood, Stone, Vinyl
Foundation	Concrete Perimeter

Additional Information

Date Listed	April 5th, 2025
-------------	-----------------

Days on Market	38
Zoning	Zone 14
Condo Fee	\$367

DATA IS DEEMED RELIABLE BUT IS NOT GUARANTEED ACCURATE BY THE REALTORS® ASSOCIATION OF EDMONTON. COPYRIGHT 2025 BY THE REALTORS® ASSOCIATION OF EDMONTON. ALL RIGHTS RESERVED. Trademarks are owned or controlled by the Canadian Real Estate Association (CREA) and identify real estate professionals who are members of CREA (REALTOR®, REALTORS®) and/or the quality of services they provide (MLS®, Multiple Listing Service®)

Listing information last updated on May 13th, 2025 at 7:17am MDT