

\$359,900 - 1705 10238 103 Street, Edmonton

MLS® #E4426669

\$359,900

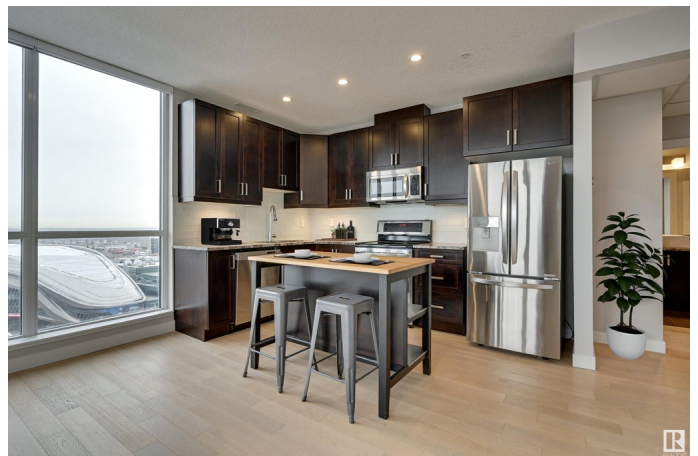
2 Bedroom, 2.00 Bathroom, 761 sqft

Condo / Townhouse on 0.00 Acres

Downtown (Edmonton), Edmonton, AB

CORNER UNIT | PANORAMIC, EXPANSIVE VIEWS | PRIVATE PATIO IN THE ICE DISTRICT! 2 BED, 2 BATH CONDO.

Welcome to The Ultima Tower, where luxury meets urban living in the heart of Edmonton's Ice District! This 2-bedroom, 2-bathroom condo offers a west-facing private patio with stunning views of downtown and the river valley. The open-concept floor plan features a modern kitchen with sleek cabinetry, granite countertops, stainless steel appliances, and an island—perfect for entertaining. The primary suite includes a closet with built-ins and a private 3-piece ensuite, while the second bedroom is conveniently located next to the 4-piece main bathroom. Upgraded hardwood flooring and tile flooring throughout, plus in-suite laundry for added convenience. The Ultima offers exceptional amenities including a 10th-floor social lounge, fitness centre, and an outdoor patio with a hot tub. Live steps from Rogers Place, 104th Street, the best restaurants, caf  s, shopping, and Edmonton's thriving downtown scene.



Built in 2016

Essential Information

MLS® # E4426669

Price \$359,900

Bedrooms	2
Bathrooms	2.00
Full Baths	2
Square Footage	761
Acres	0.00
Year Built	2016
Type	Condo / Townhouse
Sub-Type	Apartment High Rise
Style	Single Level Apartment
Status	Active

Community Information

Address	1705 10238 103 Street
Area	Edmonton
Subdivision	Downtown (Edmonton)
City	Edmonton
County	ALBERTA
Province	AB
Postal Code	T5J 0G6

Amenities

Amenities	Exercise Room, Hot Tub, Concierge Service, Rooftop Deck/Patio
Parking Spaces	1
Parking	Stall, Underground

Interior

Interior Features	ensuite bathroom
Appliances	Dishwasher-Built-In, Dryer, Hood Fan, Refrigerator, Stove-Electric, Washer
Heating	Forced Air-1, Natural Gas
# of Stories	31
Stories	1
Has Basement	Yes
Basement	None, No Basement

Exterior

Exterior	Concrete, Brick, Metal
Exterior Features	Golf Nearby, Public Transportation, Shopping Nearby, View Downtown
Roof	Flat

Construction	Concrete, Brick, Metal
Foundation	Concrete Perimeter

Additional Information

Date Listed	March 20th, 2025
Days on Market	46
Zoning	Zone 12
Condo Fee	\$537

DATA IS DEEMED RELIABLE BUT IS NOT GUARANTEED ACCURATE BY THE REALTORS® ASSOCIATION OF EDMONTON. COPYRIGHT 2025 BY THE REALTORS® ASSOCIATION OF EDMONTON. ALL RIGHTS RESERVED.Trademarks are owned or controlled by the Canadian Real Estate Association (CREA) and identify real estate professionals who are members of CREA (REALTOR®, REALTORS®) and/or the quality of services they provide (MLS®, Multiple Listing Service®)

Listing information last updated on May 5th, 2025 at 1:02am MDT