

\$749,000 - 12909 55 Street, Edmonton

MLS® #E4421576

\$749,000

0 Bedroom, 0.00 Bathroom,
Land Commercial on 0.00 Acres

Kennedale Industrial, Edmonton, AB

INDUSTRIAL CORNER LOT in Kennedale.
Excellent opportunity to build to suit or use as
it is. LOT DIMENSIONS 131.9 sq. ft. x 123.1
sq. ft. Currently had development permit
approved for MINOR INDUSTRIAL USE.
Great opportunity for development and or
owner operator use.

Essential Information

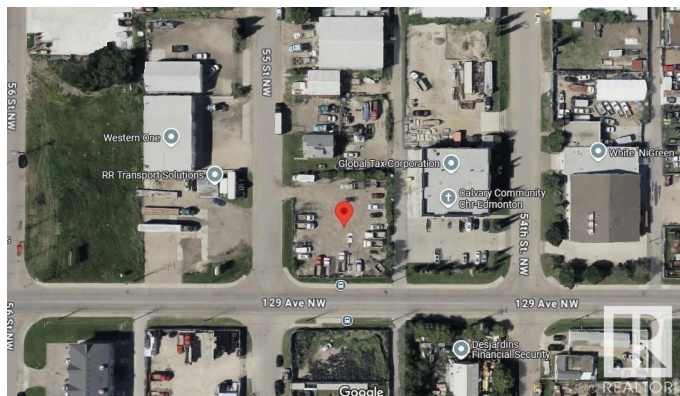
MLS® #	E4421576
Price	\$749,000
Bathrooms	0.00
Acres	0.00
Type	Land Commercial
Status	Active

Community Information

Address	12909 55 Street
Area	Edmonton
Subdivision	Kennedale Industrial
City	Edmonton
County	ALBERTA
Province	AB
Postal Code	T5A 0C7

Additional Information

Date Listed	February 14th, 2025
-------------	---------------------



Days on Market 78

Zoning Zone 06

DATA IS DEEMED RELIABLE BUT IS NOT GUARANTEED ACCURATE BY THE REALTORS® ASSOCIATION OF EDMONTON. COPYRIGHT 2025 BY THE REALTORS® ASSOCIATION OF EDMONTON. ALL RIGHTS RESERVED. Trademarks are owned or controlled by the Canadian Real Estate Association (CREA) and identify real estate professionals who are members of CREA (REALTOR®, REALTORS®) and/or the quality of services they provide (MLS®, Multiple Listing Service®)

Listing information last updated on May 3rd, 2025 at 10:47am MDT